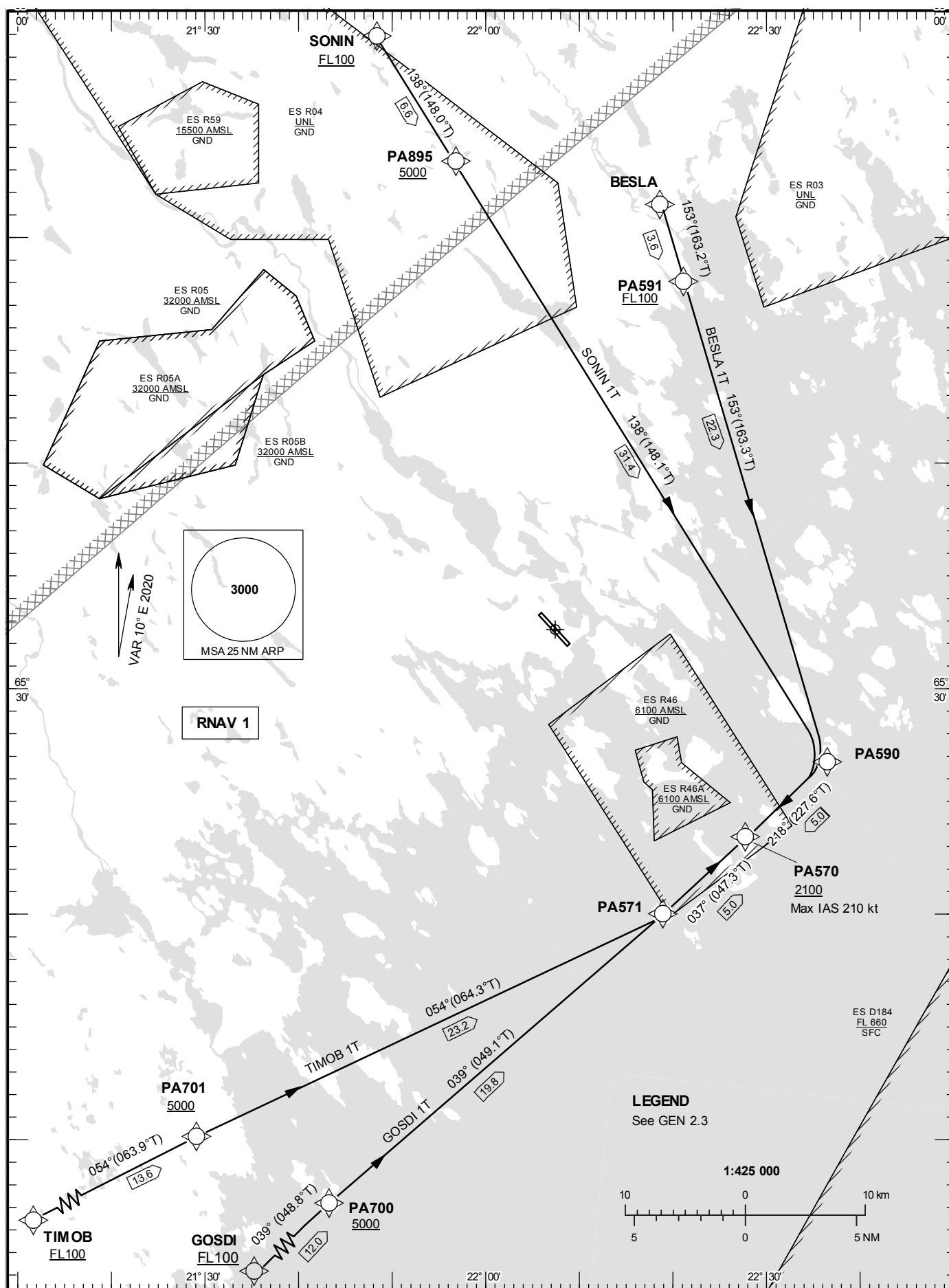


**STANDARD INSTRUMENT  
ARRIVAL CHART (STAR) -  
ICAO**

HGT and ALT in ft  
BRG are MAG  
TA 5000 ft AMSL

KALLAX TOWER	128.200
KALLAX APPROACH	125.450



CHANGE: Editorial

**LULEÅ/Kallax****Prescribed Coding of RNAV STAR for RWY 32**

RNAV 1 for positioning update.

Operators unable to fly RNAV 1 shall inform ATC "UNABLE RNAV STAR". Radar vectors will then be provided.

**BESLA 1T**

Path Term	Waypoint Identifier	Fly-over	Course °M(°T)	Dist (NM)	Turn Dir	Rest Alts (ft AMSL)	Speed Limits (kt)	VPA/ RDH (°/ft)	Rec Navaid	Navigation Specification
IF	BESLA	-	-	-	-	-	-	-	-	RNAV 1
TF	PA591	-	153°(163.2°)	3.6	-	+FL100	-	-	-	RNAV 1
TF	PA590	-	153°(163.3°)	22.3	-	-	-	-	-	RNAV 1
TF	PA570	-	218°(227.6°)	5.0	-	+2100	-210	-	-	RNAV 1

STAR instruction: BESLA – PA591 (FL100 or above) – PA590 – PA570 (2100 ft or above, max IAS 210 kt)

**GOSDI 1T**

Path Term	Waypoint Identifier	Fly-over	Course °M(°T)	Dist (NM)	Turn Dir	Rest Alts (ft AMSL)	Speed Limits (kt)	VPA/ RDH (°/ft)	Rec Navaid	Navigation Specification
IF	GOSDI	-	-	-	-	+FL100	-	-	-	RNAV 1
TF	PA700	-	039°(048.8°)	12.0	-	+5000	-	-	-	RNAV 1
TF	PA571	-	039°(049.1°)	19.8	-	-	-	-	-	RNAV 1
TF	PA570	-	037°(047.3°)	5.0	-	+2100	-210	-	-	RNAV 1

STAR instruction: GOSDI (FL100 or above) – PA700 (5000 ft or above) – PA571 – PA570 (2100 ft or above, max IAS 210 kt)

**SONIN 1T**

Path Term	Waypoint Identifier	Fly-over	Course °M(°T)	Dist (NM)	Turn Dir	Rest Alts (ft AMSL)	Speed Limits (kt)	VPA/ RDH (°/ft)	Rec Navaid	Navigation Specification
IF	SONIN	-	-	-	-	+FL100	-	-	-	RNAV 1
TF	PA895	-	138°(148.0°)	6.6	-	+5000	-	-	-	RNAV 1
TF	PA590	-	138°(148.1°)	31.4	-	-	-	-	-	RNAV 1
TF	PA570	-	218°(227.6°)	5.0	-	+2100	-210	-	-	RNAV 1

STAR instruction: SONIN (FL100 or above) – PA895 (5000 ft or above) – PA590 – PA570 (2100 ft or above, max IAS 210 kt)

**TIMOB 1T**

Path Term	Waypoint Identifier	Fly-over	Course °M(°T)	Dist (NM)	Turn Dir	Rest Alts (ft AMSL)	Speed Limits (kt)	VPA/ RDH (°/ft)	Rec Navaid	Navigation Specification
IF	TIMOB	-	-	-	-	+FL100	-	-	-	RNAV 1
TF	PA701	-	054°(063.9°)	13.6	-	+5000	-	-	-	RNAV 1
TF	PA571	-	054°(064.3°)	23.2	-	-	-	-	-	RNAV 1
TF	PA570	-	037°(047.3°)	5.0	-	+2100	-210	-	-	RNAV 1

STAR instruction: TIMOB (FL100 or above) – PA701 (5000 ft or above) – PA571 – PA570 (2100 ft or above, max IAS 210 kt)